

600x  
600mm

Double Charge  
Vitrified Tiles

**LAFFANS GRANITO PVT. LTD.**

Pipli-Jetpar Road, Near Rangpar Village,  
At. Jivapar - 363 630, Dist. Morbi (Guj.) India.  
Cell : +91- 99786 99667, +91- 99786 99666  
Email : sales@laffansgranito.com  
Web : www.laffansgranito.com



**LAFFANS**  
GRANITO

600x600mm



**DOUBLE CHARGE  
VITRIFIED TILES**

An  
**ISO 9001 : 2015**  
Certified Company

## About companies...

LAFFANS GRANITO PVT. LTD. is manufacturer of Double Charge vitrified tiles in India. It has an annual capacity of 5 mn. sq. meters in a plant located near Morbi in Gujarat.

Our motivating factor is to be the best and do the best for our customers located across the world. Our plants have state of art technology machineries which support us to perform the best. Since its inception LAFFANS Quality control department is very conscious for giving zero defect and zero tolerance in quality hence we have continuous and indomitable efforts in research and development of our products. Since its foundation we became synonyms of best customer service and the best quality. Professionally managed team for production with hard work and motivation provides optimized solutions to the market requirements.

Our Designing department gives aesthetic designs specially for our Indian market and also develops innovative patterns require in foreign markets. This is basic reason behind our market in India. Our tiles are available in a wide range of colours and textures used in airports, shopping malls, corporate houses, homes, offices etc. With an unparalleled commitment towards quality we have strived to adopt technologies and standards with the changing times. We believe that it is our team work which will reach us on the apex of success in this ceramic industry.



glazed, coated



easy to clean



stain and scratch free



low water absorption



durable, UV resistant

An  
**ISO 9001 : 2015**  
Certified Company



**LAFFANS**  
GRANITO

*Fabulous*  
**FOREVER**

600x  
600mm

Double Charge  
Vitrified Tiles



600x600mm

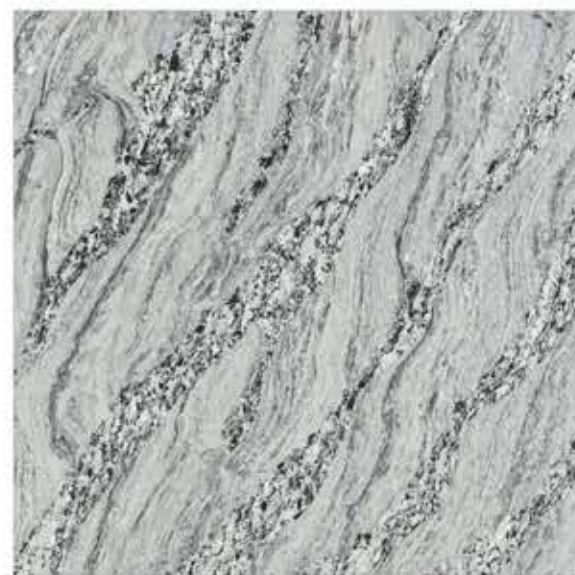
DOUBLE CHARGE  
VITRIFIED TILES



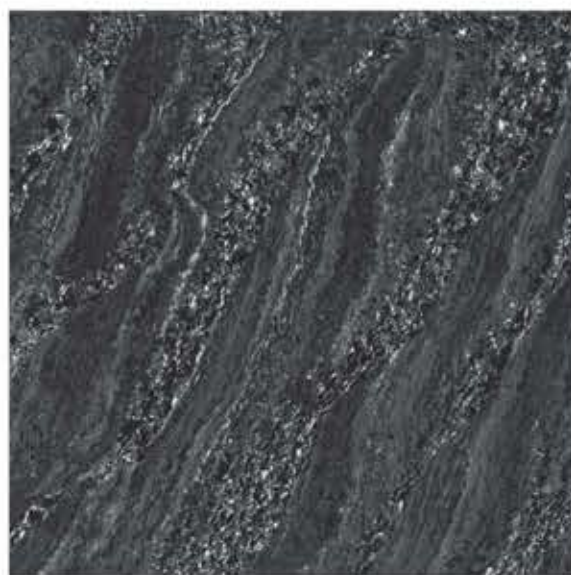
ONYX WHITE



ONYX GOLD



ASTER ICE



ASTER BLACK



600x600mm

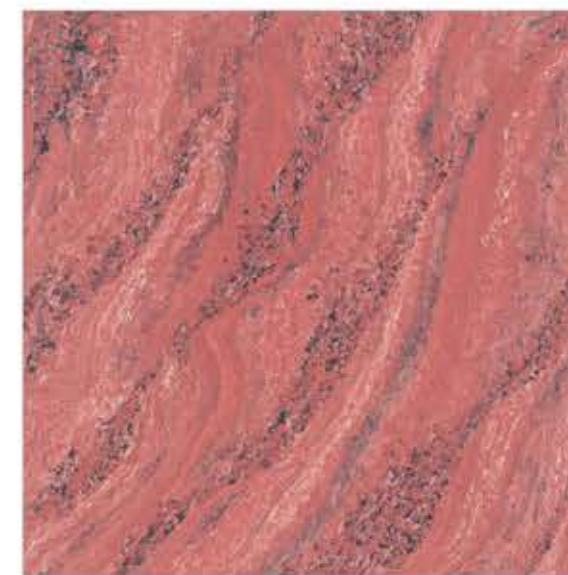
DOUBLE CHARGE  
VITRIFIED TILES



ASTER BROWN



ASTER SLATE



ASTER RED



600x600mm

DOUBLE CHARGE  
VITRIFIED TILES



MAGIC WHITE



MAGIC PINK



MAGIC CREMA WHITE



MAGIC GOLD



600x600mm

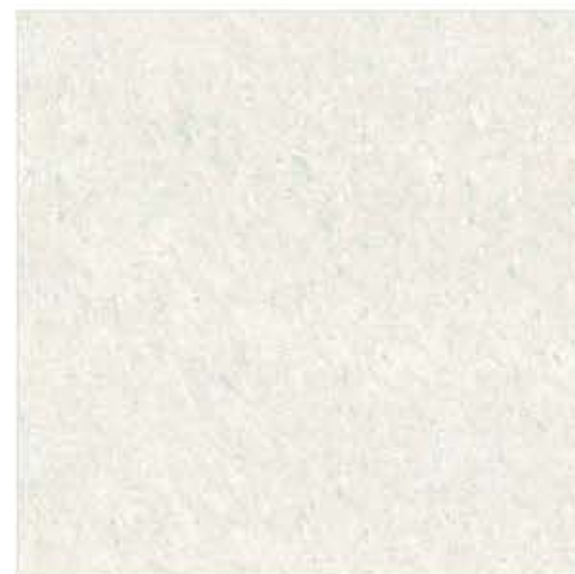
DOUBLE CHARGE  
VITRIFIED TILES



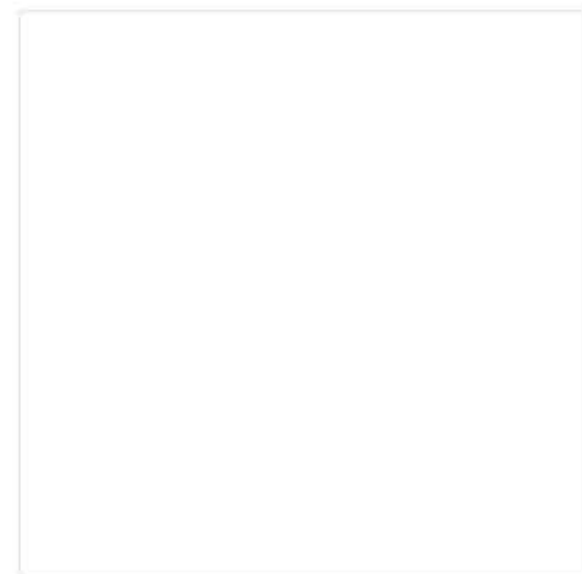
MAGIC GREEN



MAGIC BEIGE



MAGIC PISTA



PEARL WHITE



600x600mm

DOUBLE CHARGE  
VITRIFIED TILES



FUSION ASH



FUSION BLACK



FUSION GREY



FUSION MARBLE



600x600mm

DOUBLE CHARGE  
VITRIFIED TILES



FUSION ALMOND



FUSION LAVA



FUSION MAJESTIC



FUSION BRONZE



600x600mm

DOUBLE CHARGE  
VITRIFIED TILES



FUSION BROWN



FUSION GREEN

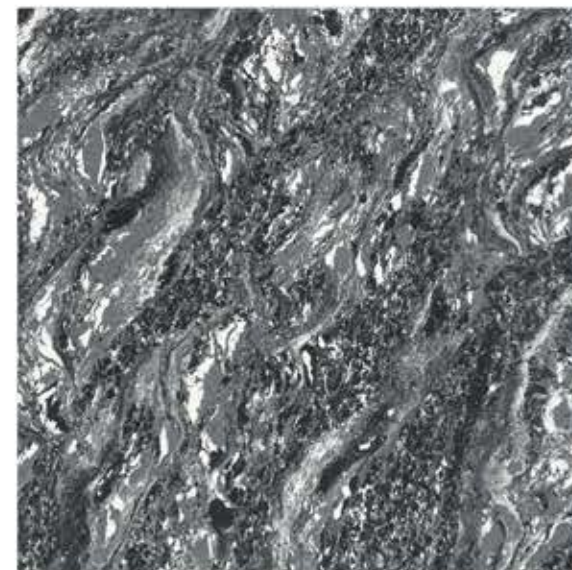


FUSION CHOCO

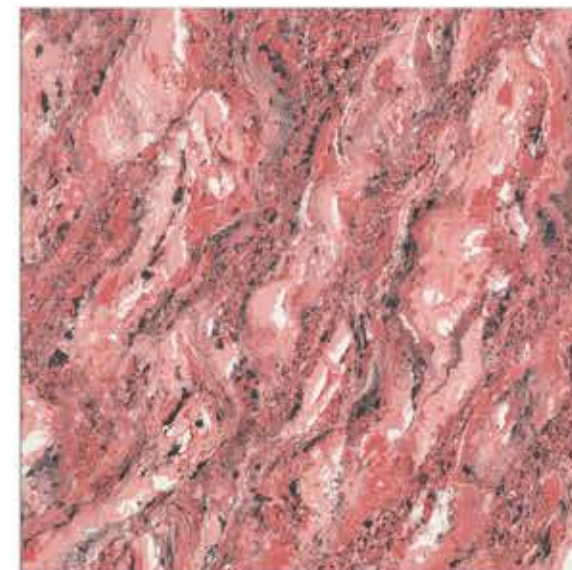


600x600mm

DOUBLE CHARGE  
VITRIFIED TILES



COSMIC BLACK



COSMIC RED



COSMIC ICE

## TECHNICAL SPECIFICATION

TECHNICAL PARAMETERS	ASTM	CEN	ISO	INT. STD	LETIVIA VITRIFIED
Deviation in length/width	C 499	EN 98	10545-2	± 0.6%	± 0.1%
Deviation in Thickness	C 499	EN 98	10545-2	± 0.5%	± 0.1%
Straightness of side	-	EN 98	10545-2	± 0.5%	± 0.1%
Rectangularity	-	EN 98	10545-2	± 0.6%	± 0.2%
Surface flatness	C 485	EN 98	10545-2	± 0.5%	± 0.2%
Water absorption	C 373	EN 99	10545-3	< 0.5%	< 0.05%
Scratch hardness (Moh's)	C 849	EN 101	-	> 6	> 8
Modulus of Rupture (N/mm <sup>2</sup> )	C 648	EN 100	10545-4	> 27 N/mm <sup>2</sup>	> 47 N/mm <sup>2</sup>
Breaking Strength (N)	C 648	-	-	1113 N	2830 N
Skid resistance	C 1028	-	DIN51130	> 0.4	> 0.6
Abrasion resistance (N/mm <sup>2</sup> )	-	EN 102	10545-6	< 204 N/mm <sup>2</sup>	< 144 N/mm <sup>2</sup>
Linear thermal expansion (/ C)	C 372	EN 103	10545-8	< 9x10 <sup>-6</sup> N/mm <sup>2</sup>	< 6x10 <sup>-6</sup> N/mm <sup>2</sup>
Thermal shock resistance	C 484	EN 104	10545-9	No Damage	No Damage
Colour resistance to light	DIN 51094	-	10545-16	No Damage	No Damage
Glossiness (Reflection)	-	-	-	-	90 %
Chemical resistance (Except HF)	C 650	EN 106	10545-13	No Damage	No Damage
Density (gm/cc)	-	-	DIN51082	> 2	2.4
Frost resistance	-	-	10545-12	Frost Proof	Frost Proof
Decorative Faults	-	-	10545-2	Defect Free	Defect Free
Surface Quality	-	-	10545-2	95 % Defect Free	> 95%
Impact Resistance	-	-	-	Good	Good
Crazing Resistance	-	-	10545-11	No Crazing	No Crazing
Resistance to house hold chemicals	-	-	10545-13	No visible effect	No visible effect

## PACKING DETAILS

Size	Normal Thickness	No. Of Tiles / Box	Coverage Area	Wt. Of Box
600x600mm	9.0 mm	4 Pcs.	1.44 Sq. Mt.	28.00 Kgs. (Approx.)

## APPLICATIONS

